

# Neotech Speciality Structures

Pre Engineered Steel Building  
Continues Colour Coating Plant

Spl. Plot No. 1, APIIC Growth Centre,  
Bobbili, Vizianagaram Dist.-535 558, Andhra Pradesh.







## QUALITY POLICY

- We adapt ourselves to understand and meet evolving customer expectations.
- we are committed to Excellence in providing unmatched product Quality with speed and sales support.



## INTRODUCTION TO NEOTECH

NEOTECH Speciality Structures is a leading provider of Pre-Engineered Steel buildings and pre fabricated structures. Our main focus is on providing Quality services at affordable price to complete every projects planned time frame. We provide Turnkey project solutions for the following areas:  
Design & Build of industrial plants  
Factories & warehouses , shopping malls, Hotels & Hospitals,  
Commercial buildings





## DESIGN SPECIFICATIONS

Neotech uses the following codes for analysis, design and fabrication of its pre-engineered buildings and components.

1. A.I.S.C. - "American Institute of Steel Construction" - Manual of Steel Construction 1989 and edition and its revisions. This manual is used for the design for all built up sections, hot-rolled sections and welded plates.
2. A.I.S.I. - "American Iron and Steel Institute" - Specifications for the design of cold formed steel structural members - 1996 Edition and its revisions. This manual is used for all welding specifications and procedures.
3. M.B.M.A. - "Metal Building Manufacturers Association" manual 1996 Edition / 2002 Edition Metal Building Dealers Association. This manual is used for all loading conditions, fabrication tolerances and is considered as a guideline for pre-engineered buildings. Its Neotech's policy to adhere to all latest updates of the above code. Apart from the above mentioned codes, Neotech is capable of designing the structures in accordance with B.S. 5950 and B.S. 449. For concrete design and related subjects, Neotech follows B.S. 8110 as the design code.

1	Codes Applicable	IS:806,1968,IS:808,1989
2	Wind Load Calculation	IS 875 Part 3 (Enclosed)
3	Seismic Load	IS 1893 - 2016 & Zone II
4	Welding Standards	American Welding Society AWS D1.1.98





### **Building Design Certification**

Upon the request of the client Neotech will provide a letter of certification towards the integrity of the design. The Engineering Manager and the Managing Director will duly authorize this letter.

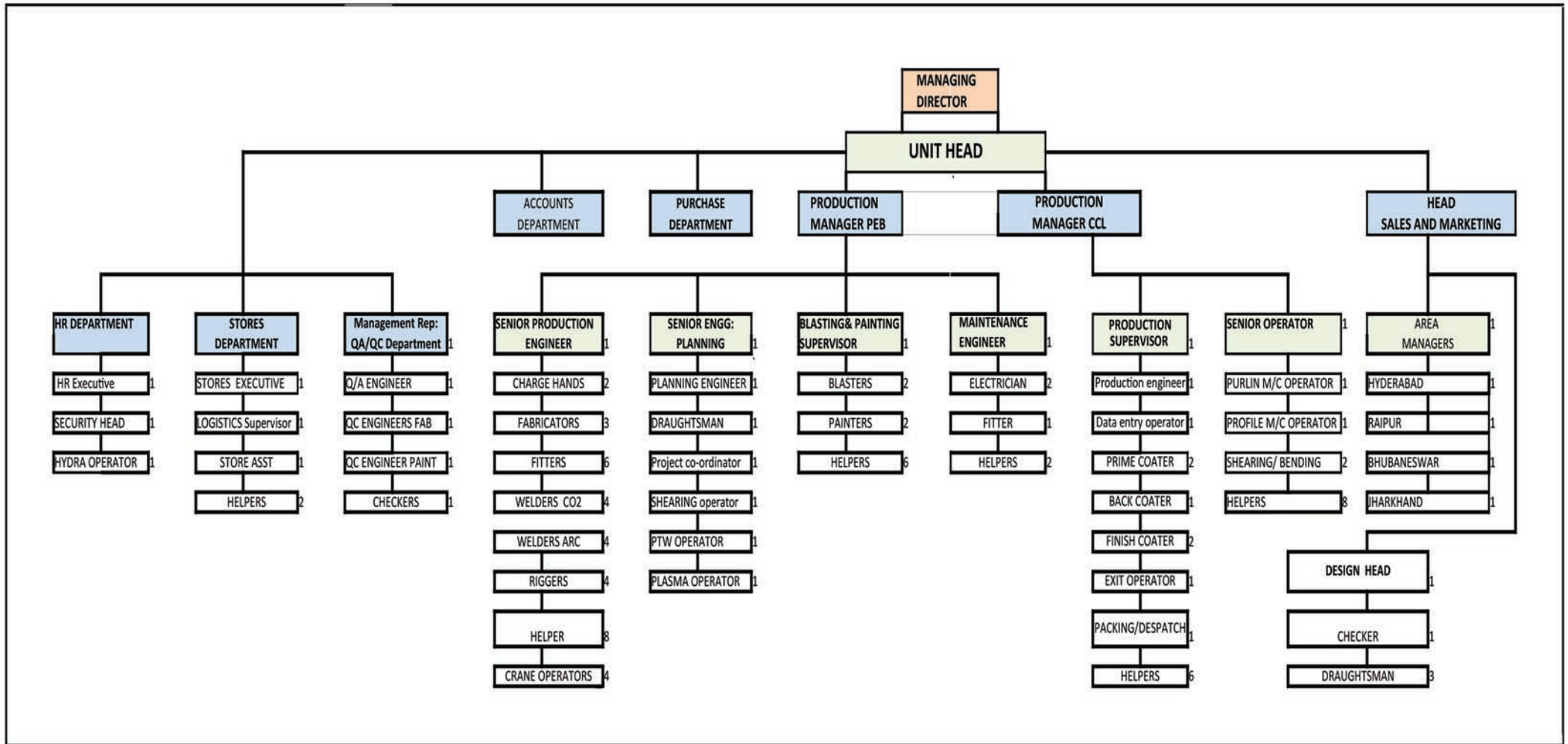
### **Health and Safety**

For Neotech good corporate citizenship begins with putting the safety of our people first. Safety is our number one core value and our corporation's top priority. Every employee has the right to return home from work safely at the end of every day, and we are working to eliminate all injuries and incidents at all of our facilities. We also believe that safe companies are successful companies, a belief that is helping to drive our quest for world-class safety performance and compliance with international standards.





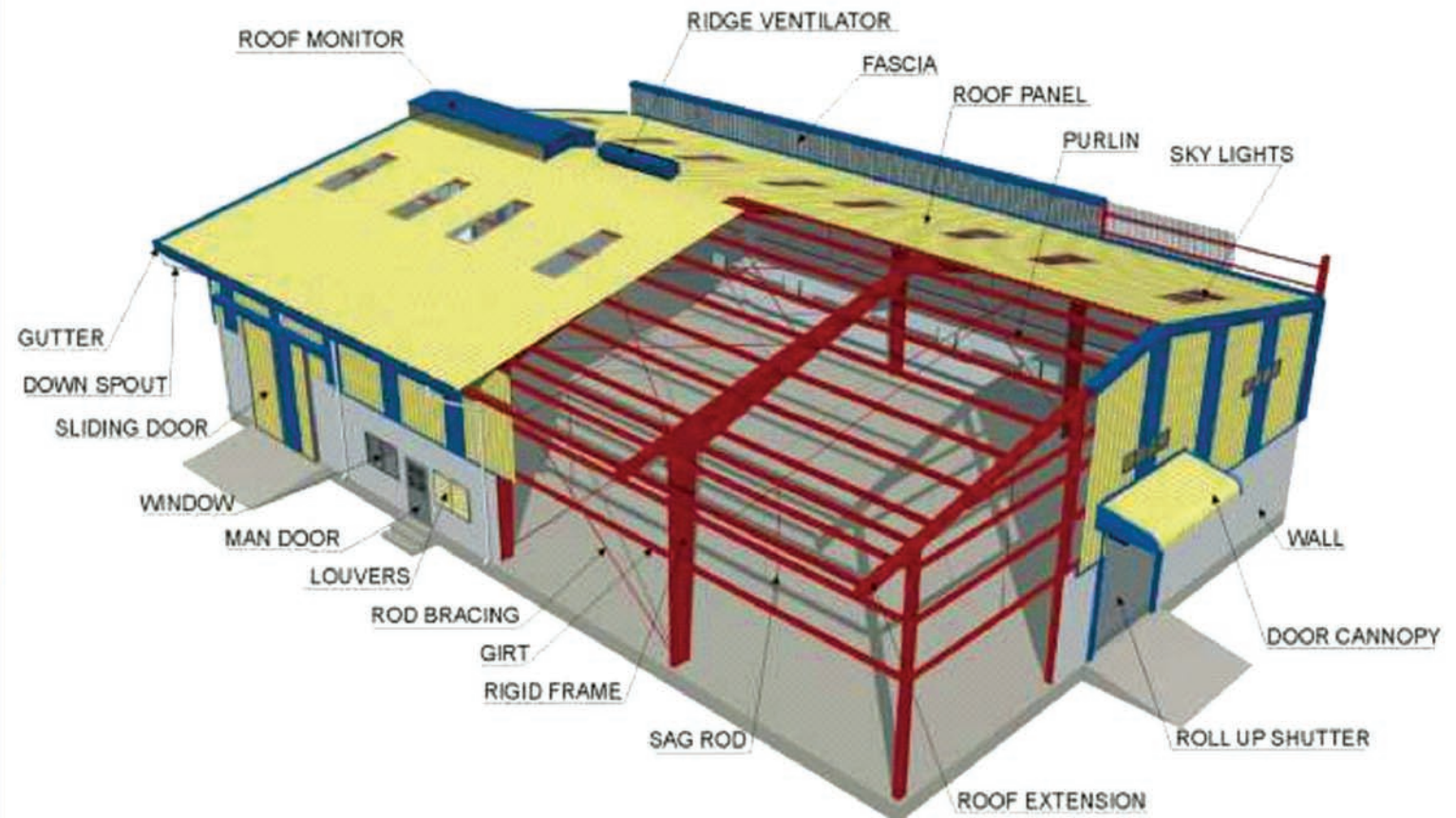
# Organization Chart





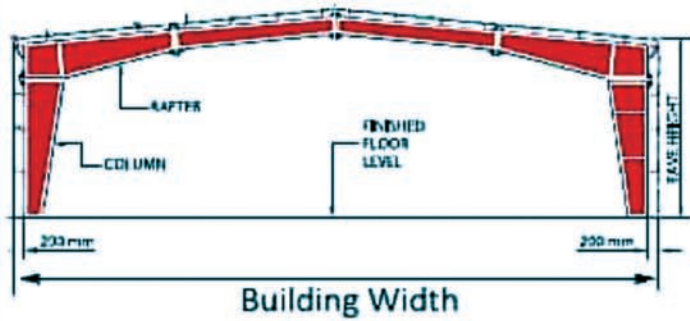


## PEB ACCESSORIES

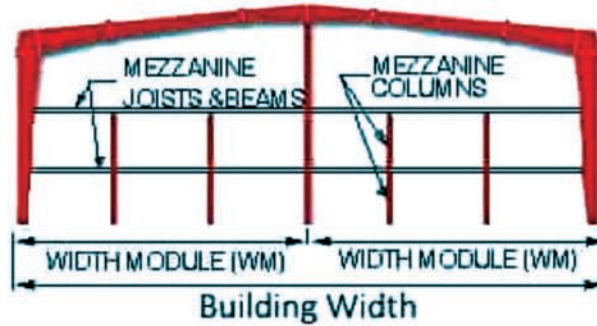




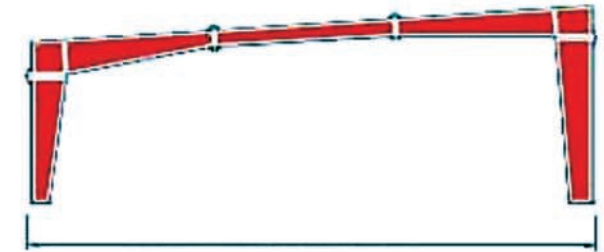
# Types of Frames



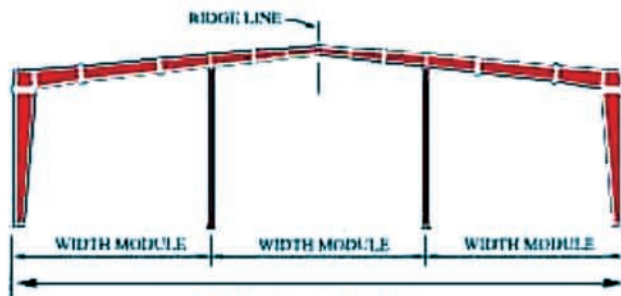
Single Span



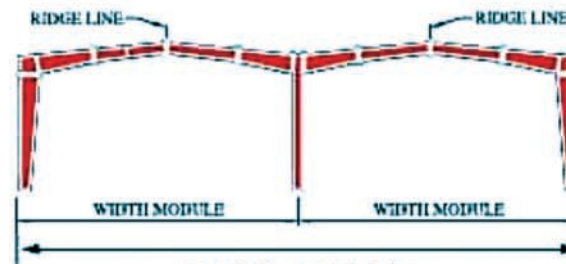
Multi-span with Mezzanine Floor



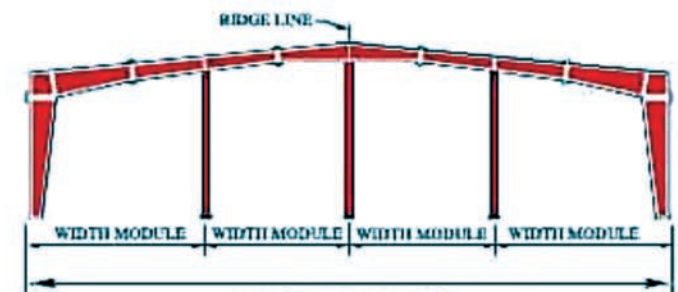
Building Width  
Single Slope



Building Width  
Multi-Span "2"



Building Width  
Multi-Gable



Building Width  
Multi-Span "3"

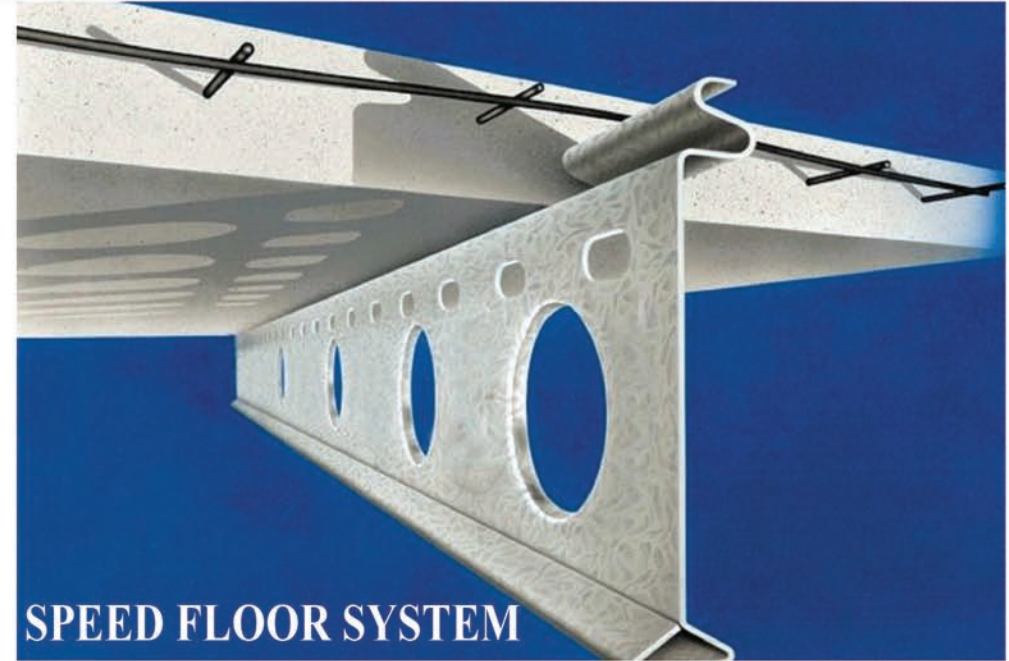




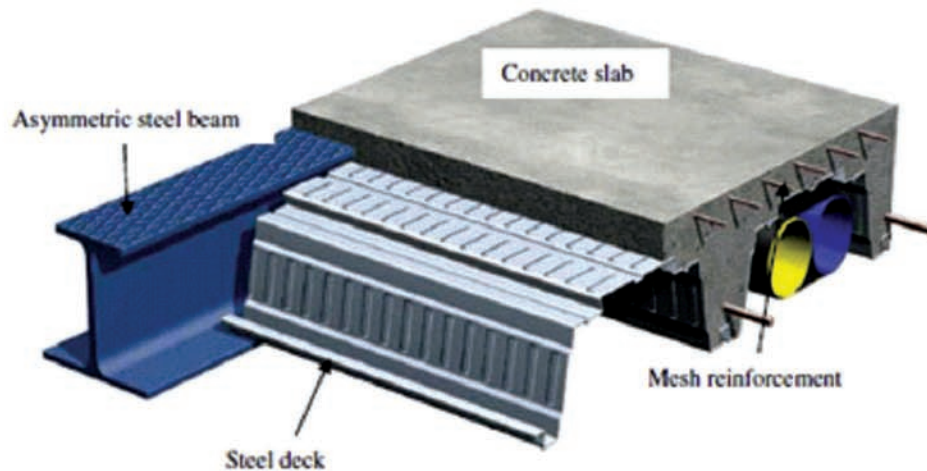
# Types of Roof Slabs



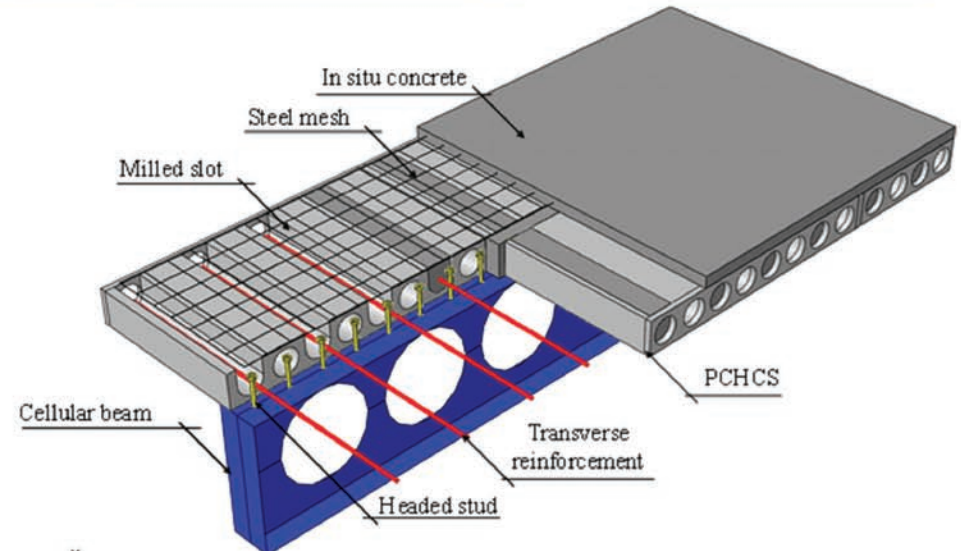
**CONVENTIONAL CONCRETE SLAB**



**SPEED FLOOR SYSTEM**



**STEEL DECKING SLAB SYSTEM**



**COMPOSITE CELLULAR BEAM SLAB**





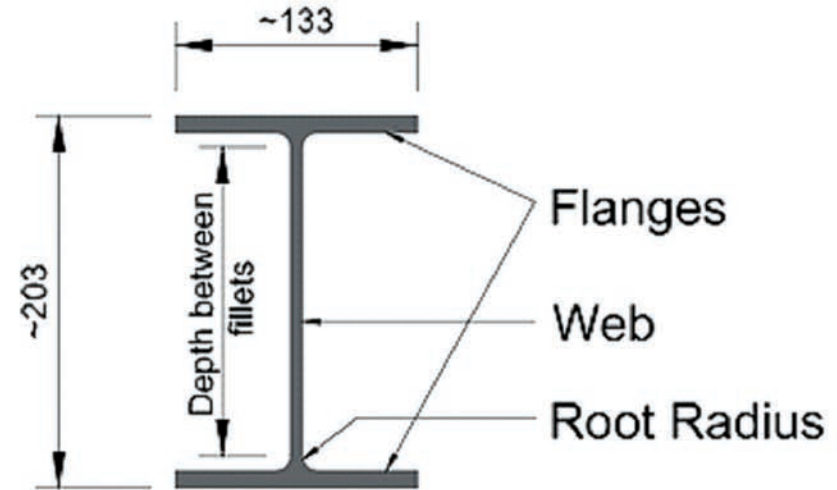
# Types of Beams



**BUILT-UP BEAMS**



**CELLULAR BEAMS**



203 x 133 x 30 UB S355

Nominal  
Height

Nominal  
Width

Weight per m  
(in kg)

Section  
Type

Steel Grade  
(if shown)

Serial Size

**HOT ROLLED BEAMS**





## Project Details

COMPLETED PROJECTS		
1	ANNAND METAL ROOFING	Design,Fabrication,supply&installation
2	ANDHRA MULTIPLEX	Design,Fabrication,supply&installation
3	ASSAM DETENTION CENTER	Design,Fabrication,supply&installation
4	ADITYA ENTERPRISES	Design,Fabrication,supply&installation
5	BALAJI AGRO GUNTUR	Design,Fabrication,supply&installation
6	JSR ASSOCIATES	Design,Fabrication,supply&installation
7	LIVAX PLASTICS	Design,Fabrication,supply&installation
8	LENIRA POLYMERS	Design,Fabrication,supply&installation
9	MOHAN SPINTEX	Design,Fabrication,supply&installation
10	MIT'S MEGA FOOD PARK RAIGADA	Design,Fabrication,supply&installation
11	MUSKAN INDIA	Design,Fabrication,supply&installation
12	MGR MODERN RICE MILL	Design,Fabrication,supply&installation
13	NARAYANI ISPAT OLAM AGRO	Design,Fabrication,supply&installation
14	GAJAPATHINAGARAM	Design,Fabrication,supply&installation
15	ROOFTECH PARAWADA	Design,Fabrication,supply&installation
16	SILLARIS ROTOMAS	Design,Fabrication,supply&installation
17	VSR ASSOCIATES	Design,Fabrication,supply&installation
18	VISAKHA DISTILLIARIES	Design,Fabrication,supply&installation
19	VAULT AGRI TECH Pvt Ltd	Design,Fabrication,supply&installation
20	VILLMAR AGRO POLIMERS	Design,Fabrication,supply&installation





## Tools and Equipments List

NEOTECH SPECIALITY STRUCTURES TOOLS & EQUIPMENTS LIST 2023			
NOS	ITEM	MAKE	QTY,NO S
1	H Beam Welding line	Primo	1
2	Heavy Duty CNC Plasma Cutting Machine	Winarc	1
3	Hydraulic Shearing machine-6.3mx 12mm	Energy mission	1
4	Hydraulic Shearing machine-4Mx 5mm	Energy mission	1
5	Hydraulic press brake 4Mx 5mm	Energy mission	1
6	GEKA Hydraulic Iron worker	GEKA	2
7	Radial Drill 50 mm	Power tech	1
8	Radial Drill 30 mm	Power tech	1
9	Magnetic base drilling machine	schifler	3
10	Turning lathe 2mx 300mm	Accurate	2
11	MIG-MAG Welding machine-400Amps	ESAB	10
12	MIG-MAG Welding machine-400Amps	ADOR	6
13	MIG-MAG Welding machine-400Amps	PANASONI C	4
14	SUB ARC Welding machine 1200 amps	MOGORA VICTOR- USA	2
15	PUG cutting machine	USA	2
16	PUG cutting machine	ESAB vishnu cranes	3
17	EOT CRANE 10 Ton	cranes	4
18	EOT CRANE 10 Ton	Future Tech	4
19	PURLIN ROLLING LINE150-300MM	POINEER	1
20	SHEET PROFILE ROLLING MACHINE	POINEER	1
21	SHEET CRIMPING LINE	POINEER	1
22	CONTINUES COLOUR COATING LINE	PERFECT	1
23	HYDRA- 16 TONS	ACE	1
24	FORK LIFT	ACE	1





## Blasting & Painting



**AIRLESS SPRAY PAINTING**



**SHOT BLAST CLEANING**





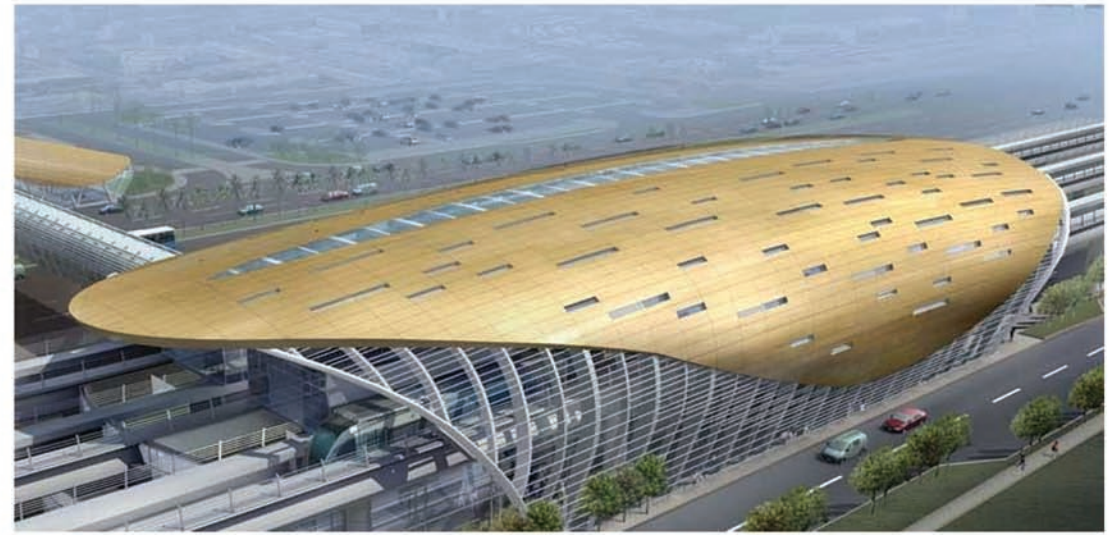
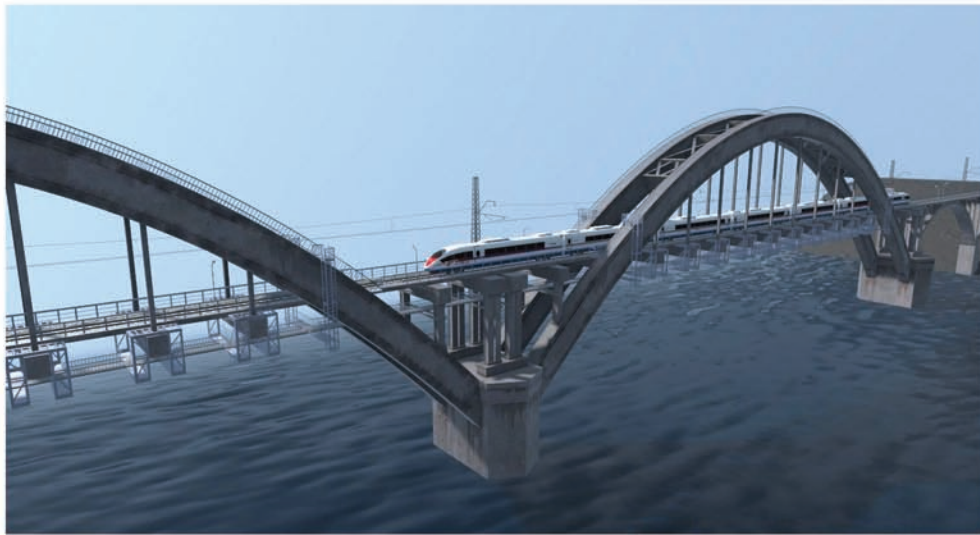
# Railway Structures







# Railway Structures





# Project Photos







## ANNAND METAL ROOFING



## MGR MODERN RICE MILL



## ANDHRA MULTIPLEX





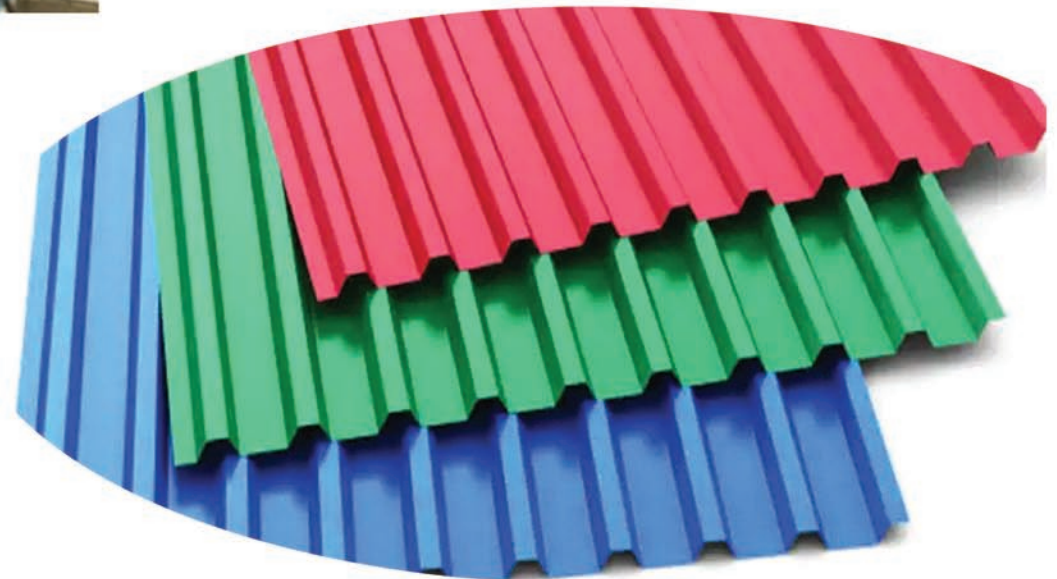
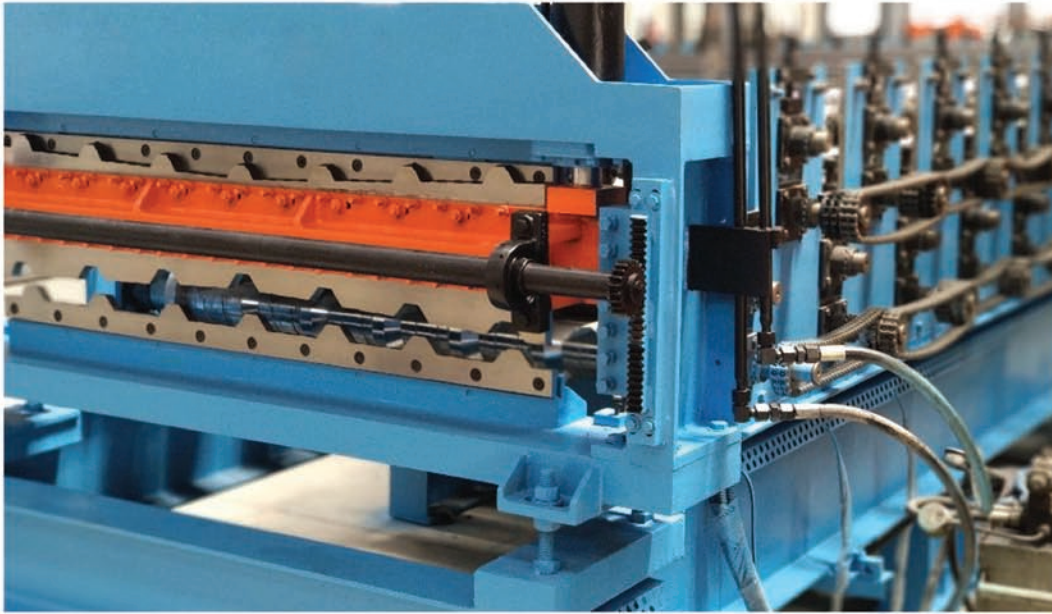
# Building Photos





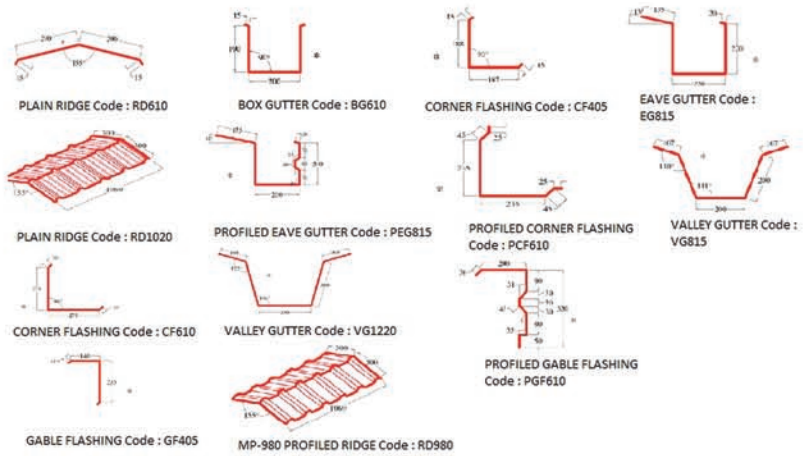


# Roof & Wall Cladding

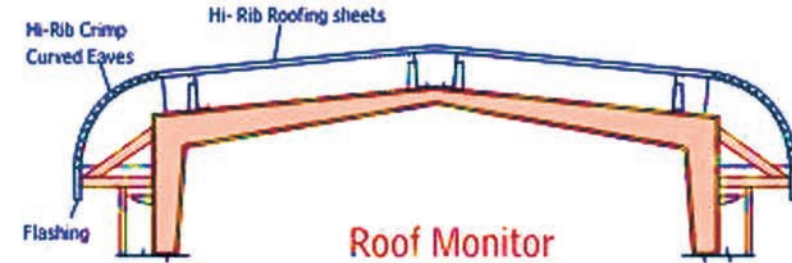




# Roof & Wall Cladding Accessories



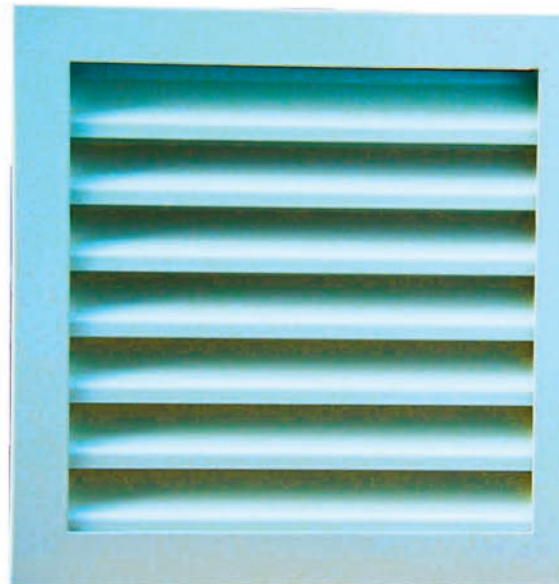
Roof monitors can be provided in buildings for natural ventilation and ridge lighting.



## SAMPLE ACCESSORIES



ROOF VENTILATOR



WALL LOUVER



ROLLING SHUTTER





## Our Equipments







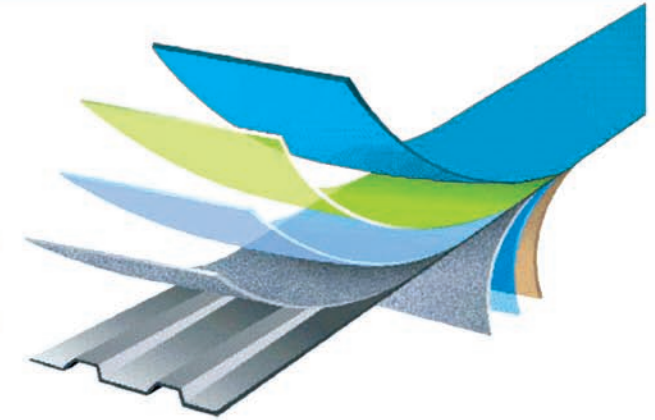
# Continuous Colour Coating Line



**PLANT**

## LAYER SYSTEM

- PREMIUM PAINT COATING
- COMMERCIAL GRADE METAL PRIMER
- CHEMICAL PRETREATMENT LAYER
- AZ50 GALVALUME CORROSION BARRIER
- STEEL OR ALUMINIUM CORE PANEL
- AZ50 GALVALUME CORROSION BARRIER
- CHEMICAL PRETREATMENT LAYER
- CORROSION RESISTANT PRIMER



**FINISHED PRODUCT**

DETAIL	BARE ZINC ALUMINIUM (BGL)	COLOUR COATED ZINC ALUMINIUM PPGL	PREPAINTED GALVANIZED IRON PPGI	BARE/ PAINTED ALUMINIUM SHEET
COATING DETAIL	55%AL,43.5%ZN,1.5% SI As per ASTM 792M ASI397:1993-ISI:5961:2011	55%AL,43.5%ZN,1.5% SI As per ASTM 792M ASI397:1993-ISI:5961:2011	99.5%ZN As per IS277 Colour as per IS 14246	AA 3015
TENSILE STRENGTH	550Mpa or as per request	550Mpa or as per request	550 Mpa / 240Mpa	150Mpa
COATING MASS	AZ 150 GSM /As required	AZ 150 GSM /As required	Z-120Gsm colour 27-30 micron/as required	NA
TOTAL COATING THICKNESS	0.47-TCT& 0..50-TCT As per-IS 513	0.50 /0.55 /0.60 TCT As per-IS 513	0.30 TCT >0.85 TCT As per-IS 513	0.5 /0.6 /0.71 /0.91
PAINT TYPE	BARE	Regular modified polyester Silicon modified polyester other coatings on request	Regular modified polyester Silicon modified polyester other coatings on request	Regular modified polyester Silicon modified polyester other coatings on request

**COATING SPECIFICATIONS**





# Neotech Speciality Structures

**Pre Engineered Steel Building  
Continues Colour Coating Plant**

Spl. Plot No. 1, APIIC Growth Centre,  
Bobbili, Vizianagaram Dist.-535 558, Andhra Pradesh.

Contact : 7560999097

E-Mail : [neotechspeciality@gmail.com](mailto:neotechspeciality@gmail.com)